

Pool Steps 101

Cantilever



Concrete form or stone is required to finish the step. Concrete is poured or interlock is installed on top of the step, making it not visible above the deck.

Bullnose

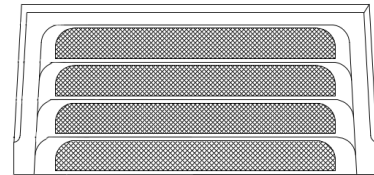


This step has its own finished edge. Concrete is poured flush with the step, not covering it, and is visible from the top of the deck.

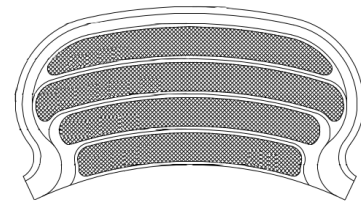
VS



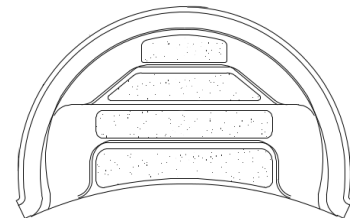
Straight



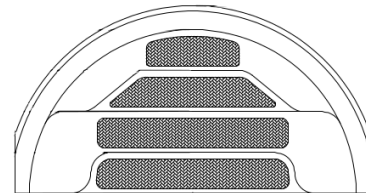
French Curved



Curved Roman



Straight Roman



Corner

